



From data to decision making: potential applications of IANDA in Tanzania

Dar es Salaam, Tanzania

11 August 2017



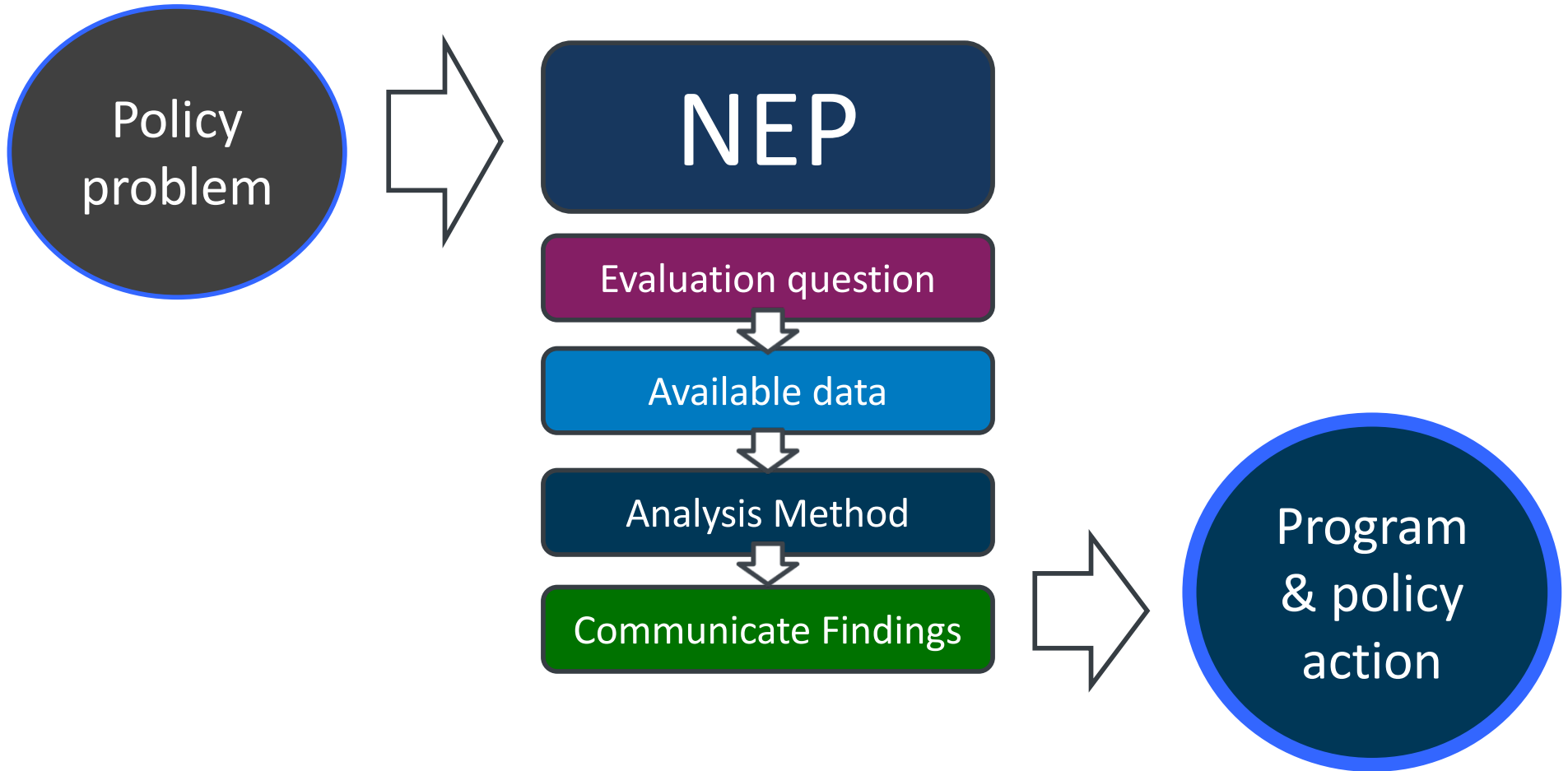
How can IANDA indicators be used to support decision making?

- GOT needs timely information to support policy formation & program planning
- IANDA aims to produce sub-national indicators related to cost of nutritious diet
- Need to identify how these data can be useful to key stakeholder groups in Tanzania
- NEP is an example of how available data are being used by GOT to answer priority questions

The *National Evaluation Platform*

is a rigorous new approach to compiling and analyzing health and nutrition data from diverse sources so that governments can get strategic, evidence-based answers to their most pressing MNCH&N program and policy questions.

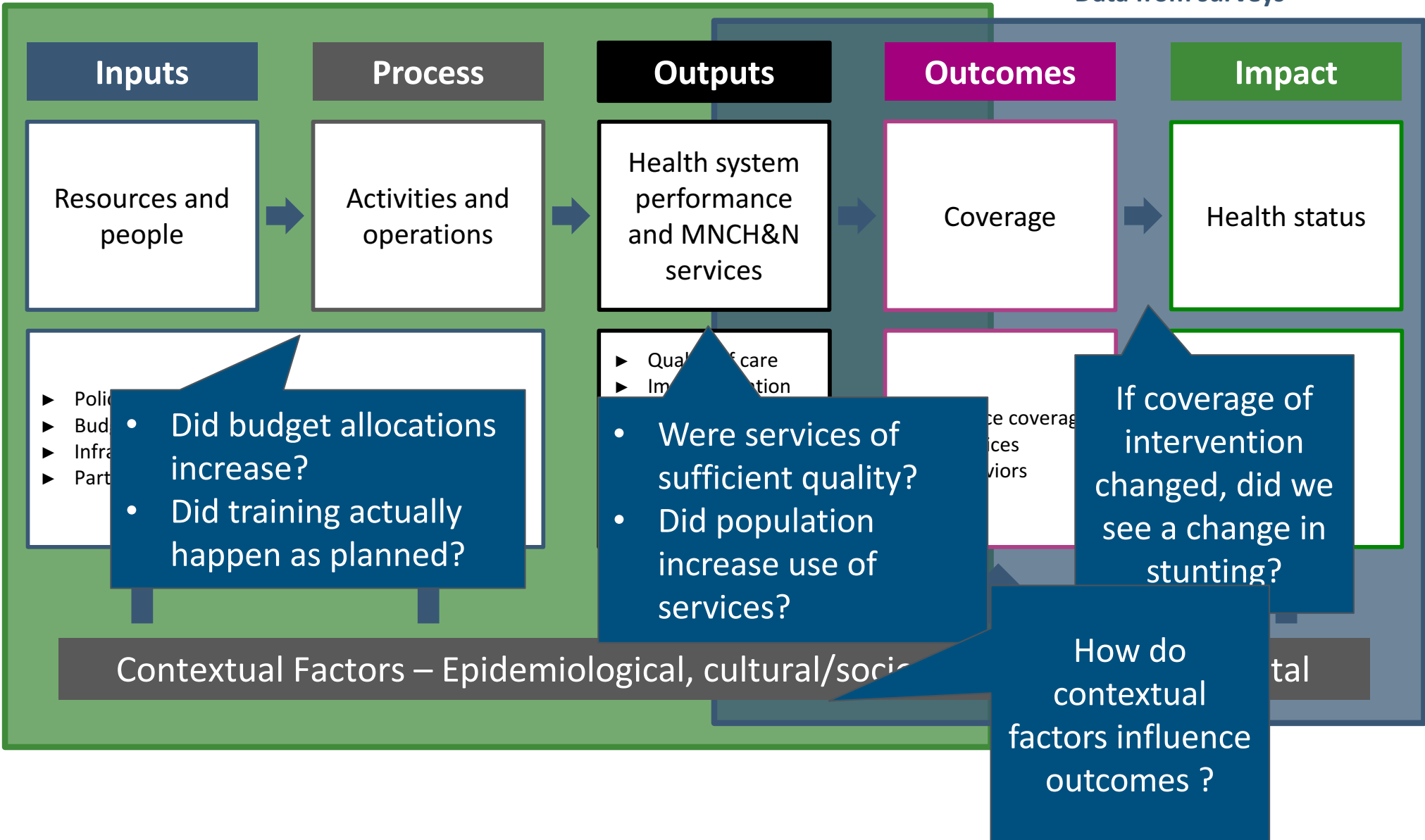
The NEP Approach



NEP evaluation questions examine the impact pathway of MNCH&N interventions using data from multiple sources

Data from Health Information Systems/Routine sources and special studies

Data from surveys





NEP Project Overview

- Government of Canada provided four years of initial funding (2014-2017) to launch NEP in four countries (Malawi, Mali, Mozambique, and Tanzania) & develop tools & capacity building to support
- Implementation by public sector MNCH&N stakeholders
 - In Tanzania led by the National Bureau of Statistics
- Institute for International Programs at Johns Hopkins University (JHU-IIP) provides technical support

NEP Tanzania Stakeholder Institutions

HIGH-LEVEL ADVISORY COMMITTEE

High Level Leadership from:

- PO RALG,
- MoHCDGEC (RCHS , Policy& Planning)
- TFNC
- PMO-Scaling Up Nutrition
- NBS

OTHER GOVERNMENT & DEVELOPMENT PARTNERS (HLAC)

- Canada High Commission
- DPG Health
- DPG Nutrition

TECHNICAL TASK TEAM (TTT)

Program and Monitoring & Evaluation (M&E) technical staff

- PO RALG
- MoHCDGEC (RCHS , Policy& Planning)
- TFNC
- PMO-Scaling Up Nutrition
- NBS

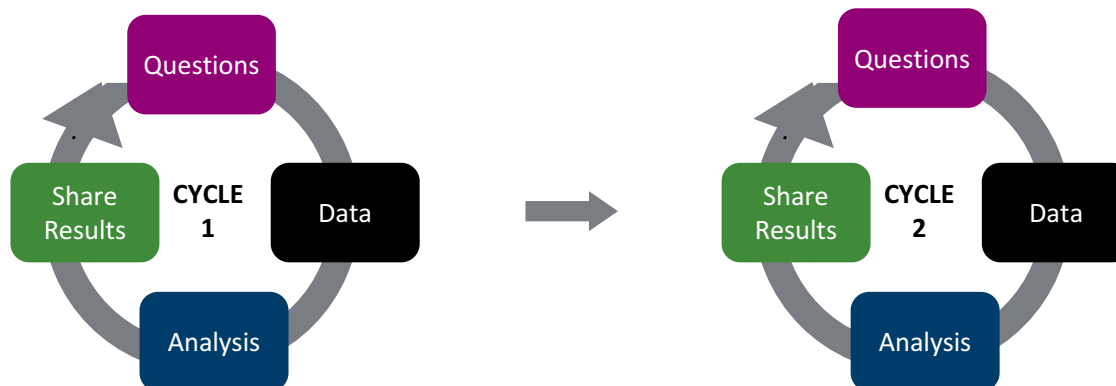
SCIENTIFIC & DATA PARTNERS (TTT)

- MUHAS
- SUA
- NIMRI
- COSTECH
- EASTEC
- Partnership for Nutrition in Tanzania (PANITA)

NEP HOME INSTITUTION – National Bureau of Statistics (NBS)

Technical support: JHU-IIP

NEP TT has answered two cycles of evaluation questions & built core knowledge & skills for ongoing data use

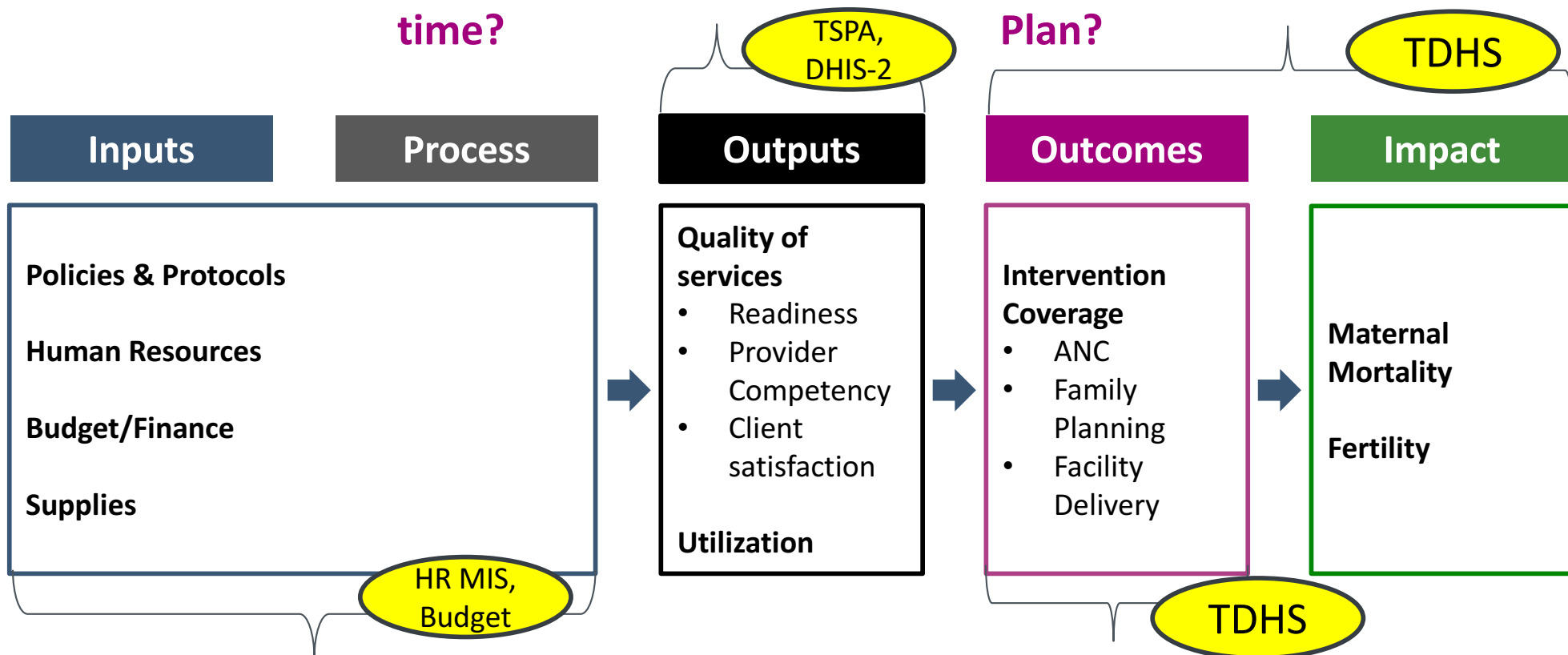


Forming evaluation questions		<ul style="list-style-type: none"> • Using Impact Models • Developing evaluation plan
Data (Mapping, Quality Assessment, Management)	<ul style="list-style-type: none"> • Household Survey 	<ul style="list-style-type: none"> • Facility Survey • Routine (DHIS-2; HR-MIS; Budget) • Qualitative study
Analysis	<ul style="list-style-type: none"> • Calculation of coverage & Impact Indicators • Lives Saved Tool (LiST) • Time trends 	<ul style="list-style-type: none"> • Group Comparisons • Equity Analysis • Integrating Qualitative findings
Interpretation & Communication	<ul style="list-style-type: none"> • Effective presentations • Power Point, Access & Excel skills 	<ul style="list-style-type: none"> • Identifying key messages & recommendations • Data visualization • Policy briefs • Effective presentations

Cycle 2 Example of how NEP uses data from multiple sources to answer questions : Evaluation of One Plan (2008-2015)

3. Did services become increasingly available, stronger, & more utilized over time?

1. Did Tanzania meet targets & objectives set out in the One Plan?

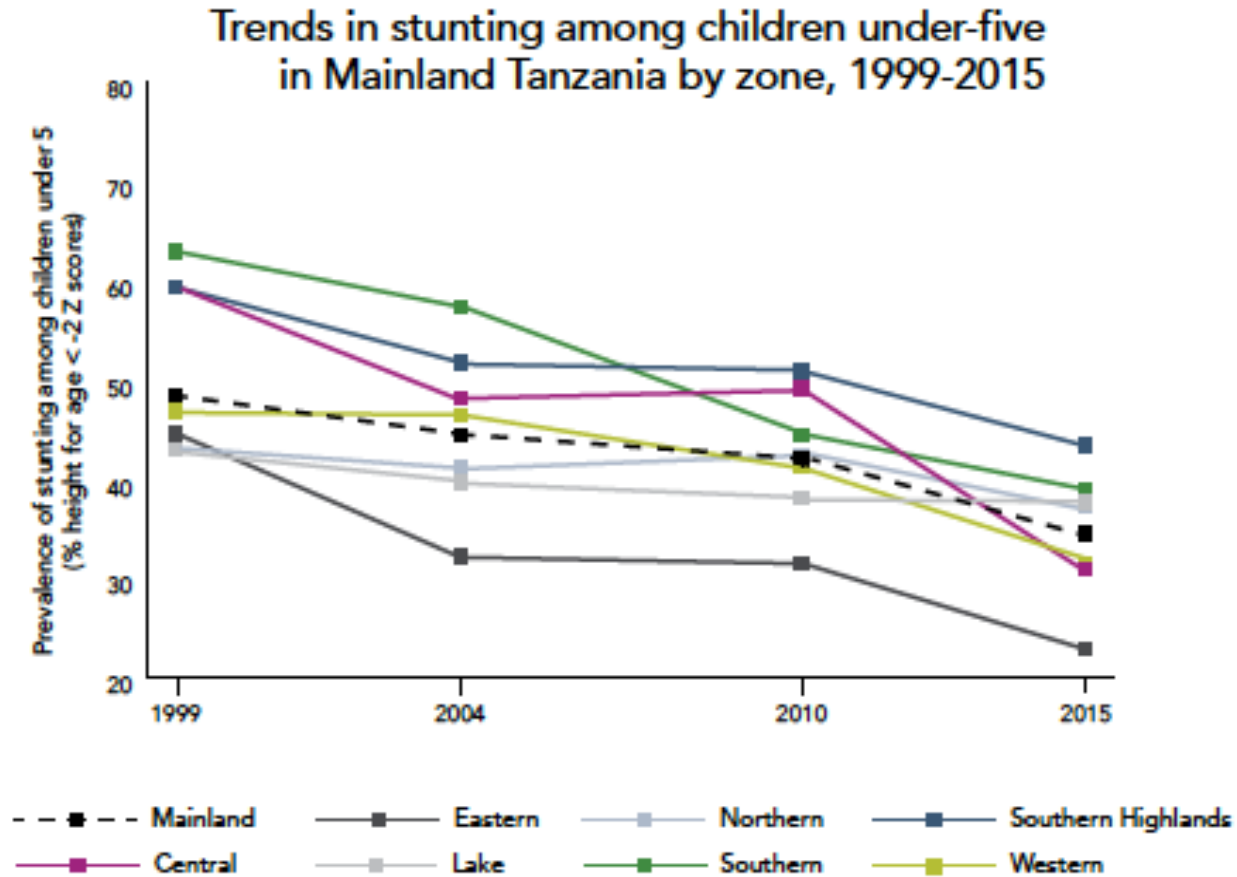


4. Were the inputs & activities carried out per plans?

2. Did coverage of interventions become more equitable across the period of the One Plan?

We are looking at progress across Mainland Tanzania and across regions

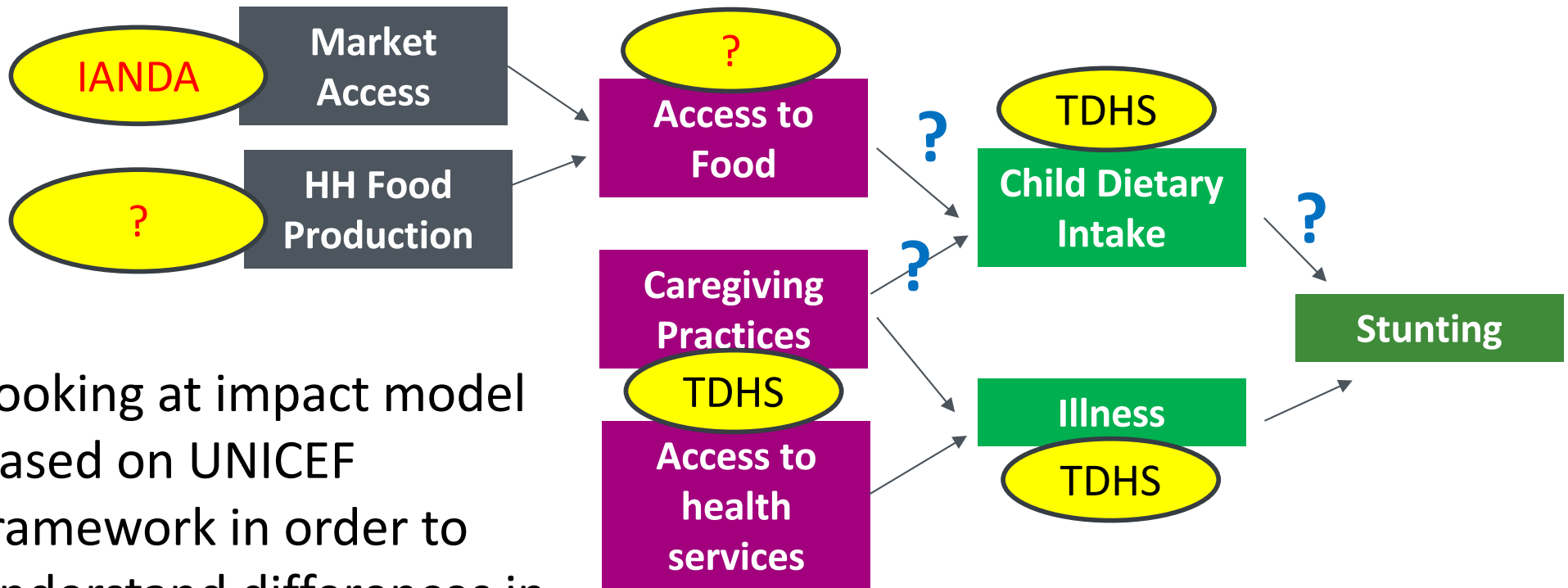
How could NEP use IANDA indicators?



Reduction in stunting & wasting varies at zonal & regional levels

*Example of an NEP question:
How do we explain differences across regions?*

NEP question: Do regions with poorer child diet diversity have poorer access to food?



Looking at impact model based on UNICEF framework in order to understand differences in stunting, we have to look at differences in drivers of dietary intake across regions

TDHS provides regional estimates for several key elements of the impact model but does not include data to explain food access...

IANDA will help fill data gap

IANDA reinforces NEP in other ways



- uses existing data sources
- available at sub-national level
- can be calculated across time
- can be calculated directly by stakeholders in Tanzania
- data useful for a variety of policy & program questions

ASANTENI SANA